

GRAIN > COMMERCIAL GRAIN BIN SWEEPS >
UNDERBIN SYSTEMS

The economical workhorse of Sudenga's line of commercial bin augers.
Complete commercial underbin systems (8", 10" and 12") for bins to 80' in diameter
for dryer or concrete bin floor applications. Capacities from 2,400 to 5,600 BPH.



Sudenga®

INDUSTRIES, INC. COMMERCIAL

Underbin Auger Systems

Complete commercial underbin round tube (8", 10" and 12")
auger systems for bins to 80' in diameter for
dryer or concrete bin floor applications.
Capacities range from 2,400 BPH to 5,600 BPH
depending on which power head is ordered.
Flanged galvanized tube standard.



*Learn more
or get a quote*

Series 1 Sweep Augers

7-1/4" sweeps handle up to 2,050 BPH.
9-1/4" sweeps handle up to 3,700 BPH.
11-1/4" sweeps handle up to 5,900 BPH.
Available for bins up to 80' in diameter.
Reduction end wheels, motorized push tractors
and sweep controls available as options.

**MADE
★IN THE★
USA**

1-888-SUDENGA | 1-712-475-3301 | Fax: 1-712-475-3320
PO Box 8, 2002 Kingbird Ave., George, IA 51237 USA
sales@sudenga.com | www.sudenga.com

GRAIN > COMMERCIAL GRAIN BIN SWEEPS >
UNDERBIN SYSTEMS

POWERHEADS

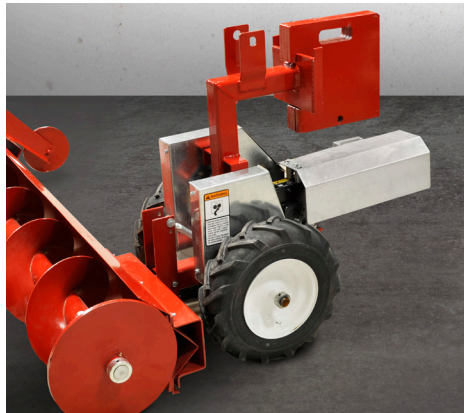
Horizontal: 8, 10 and 12" horizontal power heads feature quick tension motor mount and fully enclosed belt shields. End plate removable on all sizes allowing underbin auger to be pulled from under bin without removing the motor.



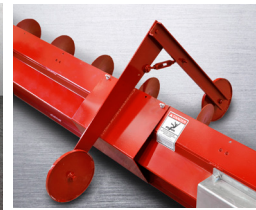
27° Inclined: for 8 and 10" underbin systems. 8" incline offers up to 2,000 BPH and 10" incline offers up to 3,200 BPH. Commercial incline features double bearing at driveshaft and constant velocity knuckle to transmit power reliably. 7 ft. tube length.



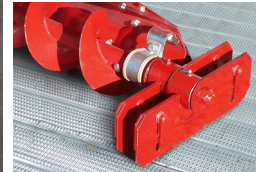
Vertical: for 8 and 10" underbin systems. Vertical unloaders are double drive - one motor for the underbin auger and one for the vertical unloader. 8" vertical handles up to 2400 bph while 10" vertical handles up to 3,800 BPH. 16 ft. tube length.



Tractor drive



Sweep carrier



Sweep walker

ACCESSORIES

TRACTOR DRIVE: Ideally suited to replace mechanical reduction end wheels or sweep walkers. Provides more control over advancement of the sweep from outside the bin. Great for upgrading existing sweeps to a more "zero-entry" complaint form. The 3/4 HP explosion proof motor, oil-bath worm gear reducer drive, and 4.8"/4.0" tires provide positive, aggressive sweep movement. Eight suitcase weights are provided, with room for more. Order with the optional, but recommended Auto Advance to control movement from outside.

REDUCTION DRIVE WHEEL: Less wheel spin and longer wheel life.

SWEEP WALKER: Steel wheel durability and rubber wheels traction. Offset cams produce positive movement in grain. Height adjustment for uneven floors.

SWEEP CARRIER: Keeps sweep flightings from "bottoming out" on uneven floors. One carrier is supplied with sweeps for bins 48 ft. and larger. Extra carriers may be added as desired.

SWEEP STOP: Attaches to the inside of the bin wall. Limits the sweep to one revolution.

CASTORING JACK: Easy positioning of the sweep over the center sump.



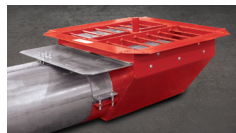
Sweep stop



Reduction end wheel



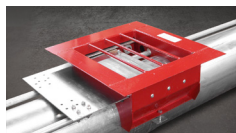
Center sump. Concrete floor.



Center sump. Dryer floor.



Int. sump. Concrete floor.



Int. sump. Dryer floor.

SUMPS

Center and intermediate sumps available for concrete and dryer floors. Center sumps have 20" x 20" openings; the largest in the industry. These large openings reduce the chance of plugging. Gates for all sumps ride on UHMW polyethylene rollers for smooth operation. With concrete floor sumps, the gates retract under sump covers, keeping weight off the gates. An optional rack and pinion gate control is the ultimate in easy sump operation. Wide 3" top flanges makes installation easy in dryer floors, concrete floors or trenches.

CAPACITIES

Bin Auger	Discharge Auger	Approximate Capacities (BPH)
8"	Horizontal 8"	2,400
	27° Incline 10"	2,000
	Vertical 10"	2,200 - 2,400
10"	Horizontal 10"	to 4,500
	27° Incline 12"	3,200
	Vertical 12"	3,600 - 3,800
12"	Horizontal 12"	to 5,600

**MADE
 IN THE
 USA**

*Learn more
 or get a quote*



1-888-SUDENGA | 1-712-475-3301 | Fax: 1-712-475-3320
 PO Box 8, 2002 Kingbird Ave., George, IA 51237 USA
 sales@sudenga.com | www.sudenga.com