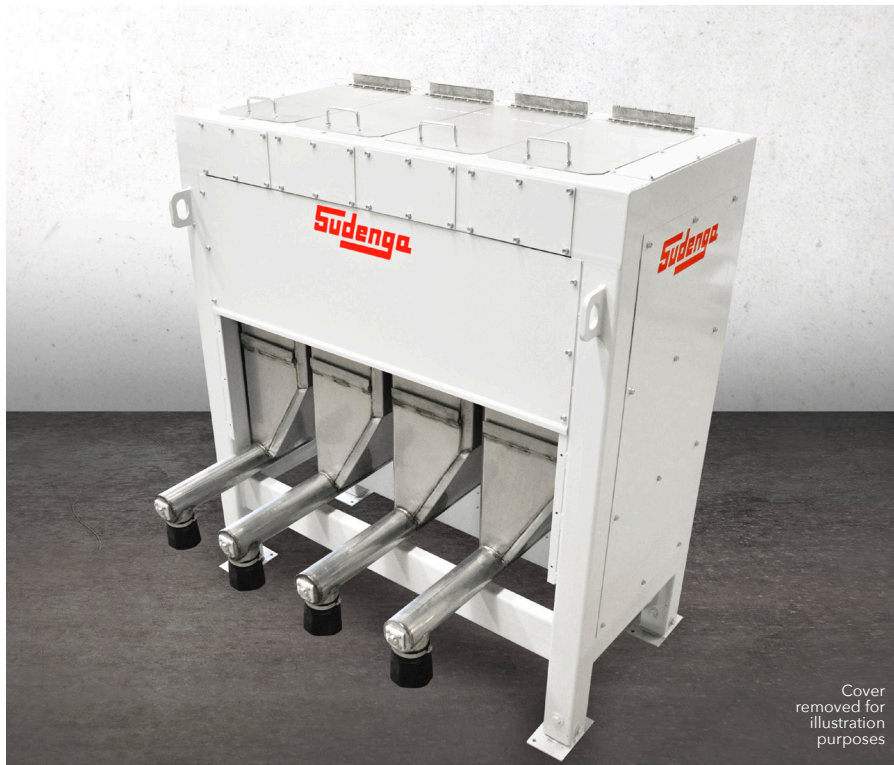


FEED EQUIPMENT  
**LOSS-IN-WEIGHT**

Weigh and add ingredients automatically for the fastest, most efficient, and accurate batching possible. Avoid handling medications and additives with the Sudenga Loss-In-Weight Micro Skid. NTEP certified Loss-In-Weight systems are available.



**Sudenga**®  
**INDUSTRIES, INC.**



- Decreased Batching Time: All ingredients are weighed and added simultaneously.
- Inventory Accuracy: Continuous inventory is monitored quickly, efficiently, and accurately.
- Lower Installation Height: Less space required than conventional micro systems for more design and installation flexibility.
- Only NTEP Lab Certified Loss-In-Weight System in the country.
  - No drugs or additives are handled manually with the Loss-In-Weight system.

Learn more  
or get a quote



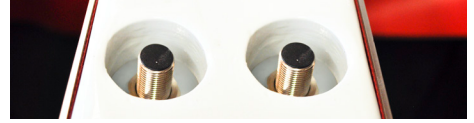
1-888-SUDENGA | 1-712-475-3301 | Fax: 1-712-475-3320  
PO Box 8, 2002 Kingbird Ave., George, IA 51237 USA  
sales@sudenga.com | www.sudenga.com

FEED EQUIPMENT  
**LOSS-IN-WEIGHT**



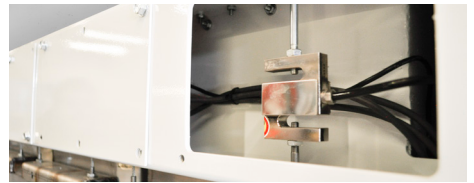
**EASY CALIBRATION**

Remove single panel and use the provided shelf panel and calibration weights for quick and easy scale calibration.



**PROXIMITY SWITCH**

Proximity sensors that monitor if hopper lid is open. If lid is open the sensor sends a signal to stop the batching process for that particular hopper until the lid is closed and batching system verifies hopper weight and then continues batching. (Grommet removed for illustration purposes.)



**SERVICE AREA FOR LOADCELL**

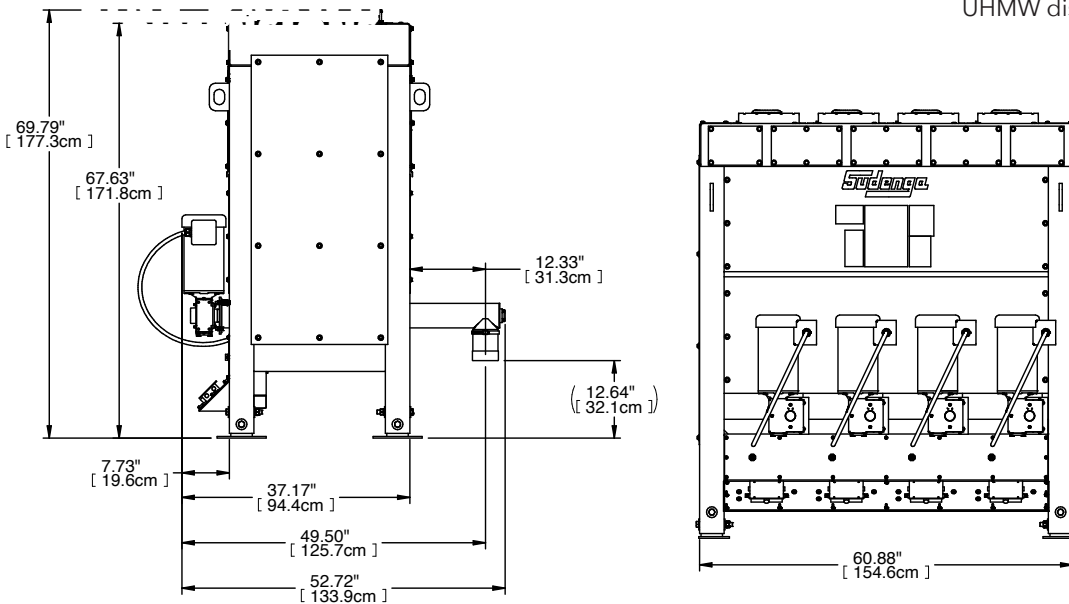
Large access panel for servicing the load cells. Single loadcell on discharge side and two loadcells on motor/gearbox side.



**DISCHARGE**

Discharge with low maintenance UHMW discharge bearing.

VIEW OF BACK SIDE



Close up of the motor gearbox, & junction box

*Learn more  
or get a quote*



1-888-SUDENGA | 1-712-475-3301 | Fax: 1-712-475-3320  
 PO Box 8, 2002 Kingbird Ave., George, IA 51237 USA  
 sales@sudenga.com | www.sudenga.com